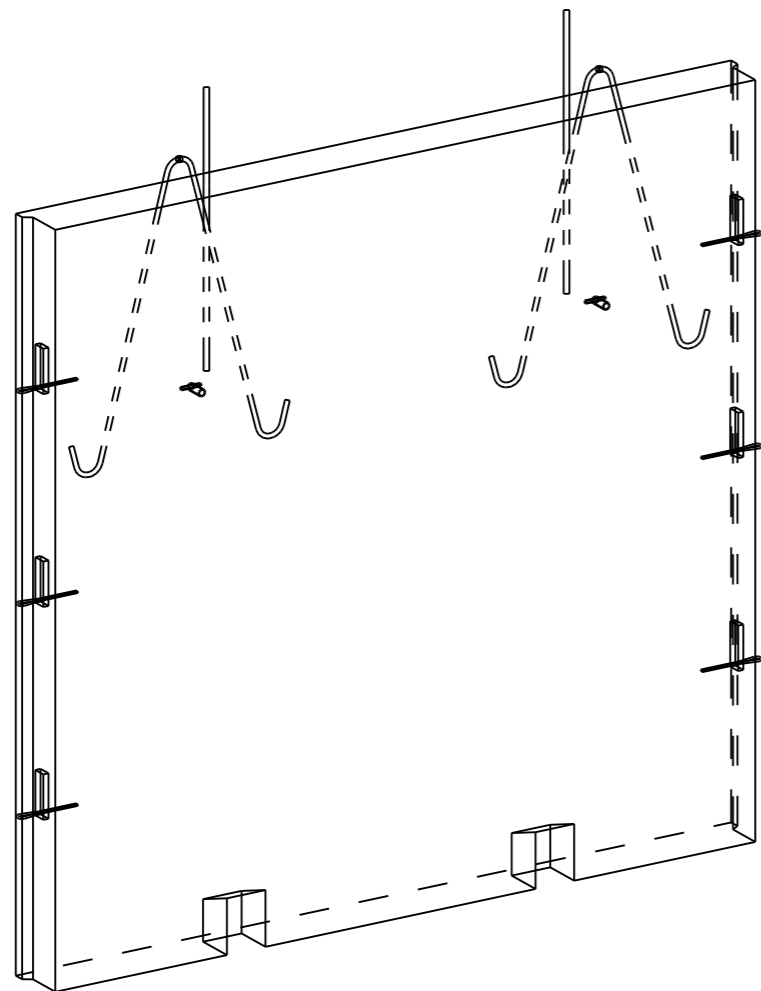
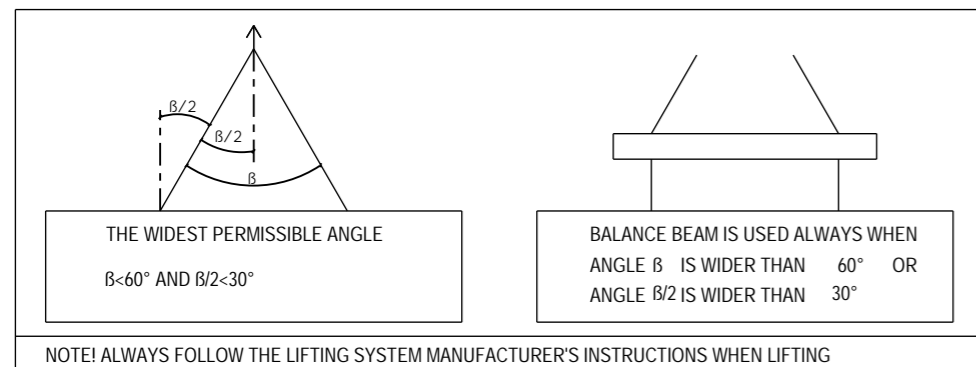


EMBED LIST			
CAST UNIT WEIGHT IS CALCULATED USING CONCRETE VOLUME AND DENSITY 2500 kg/m ³ + weight of embedded objects.			
ELEMENT POSITION	PCS	AREA [m ²]	
V-1	1	7.47	
CONCRETE	NAME	VALUE	UNIT
C30/37	PARTITION WALL	1.46	m ³
ELEMENT TOTAL WEIGHT:			3.67 t
VALUE	UNIT	EMBEDS	
2	pcs	PINTOS_SA_16 S235JR	
4	pcs	PVL80	
4	pcs	PVL100	
2	pcs	Vemo RV M16x70 S235JR	
2.9	kg	B500B ø8	
17.9	kg	B500B ø10	
3.2	kg	B500B ø16	

IF THE PRECAST MANUFACTURER WANTS TO REPLACE AN EMBED OR MATERIAL WITH ANOTHER, THE CONSTRUCTION/ELEMENT DESIGNER MUST APPROVE THE CHANGE BEFOREHAND



LIFTING ANGLES



GENERAL INFORMATION

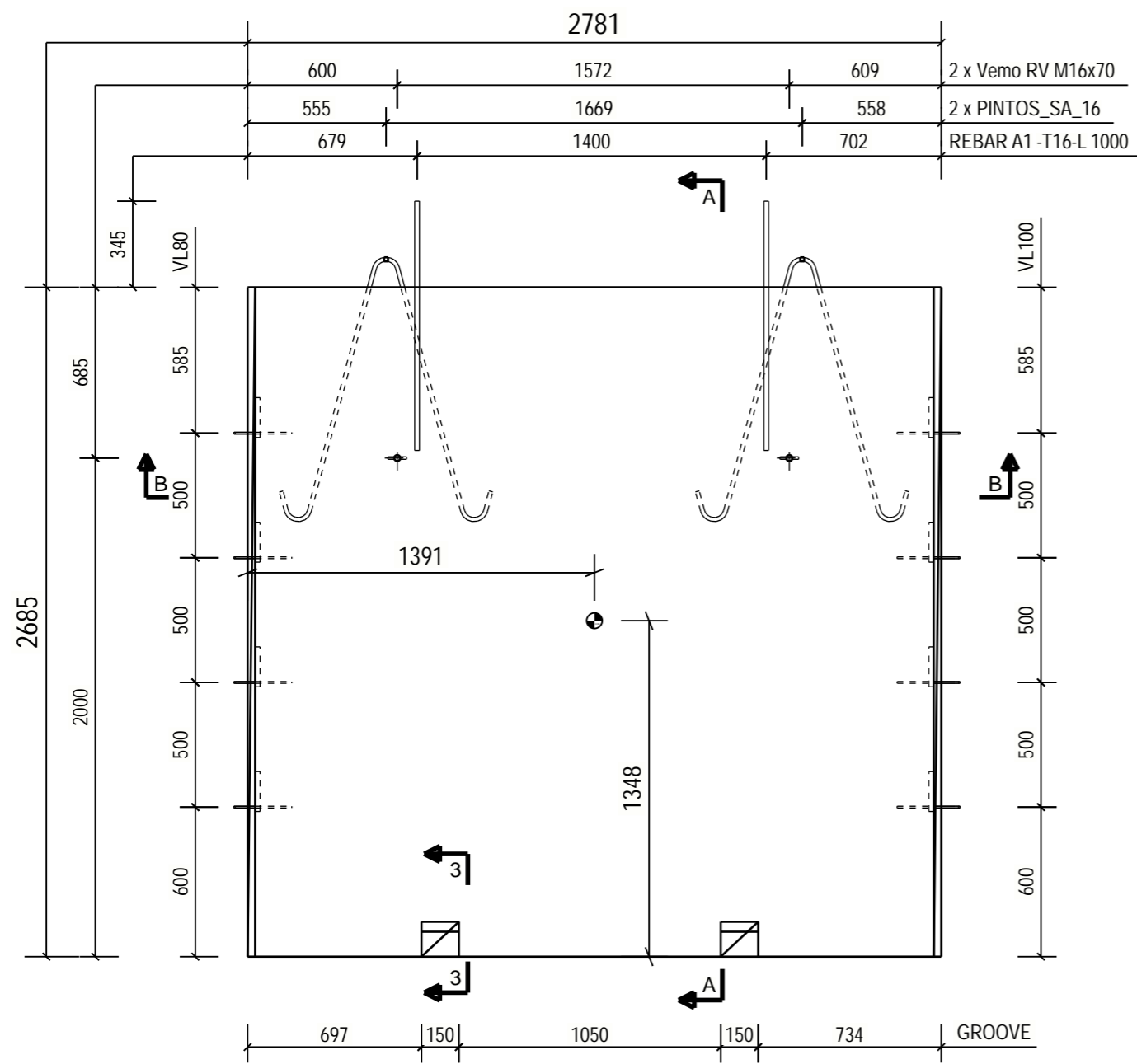
Planned life time	100 Y	
Exposure class	XC1	SFS-EN 1992-1-1+NA
Fire resistance class	R60	
Consequence class	CC2	

PRODUCT INFORMATION

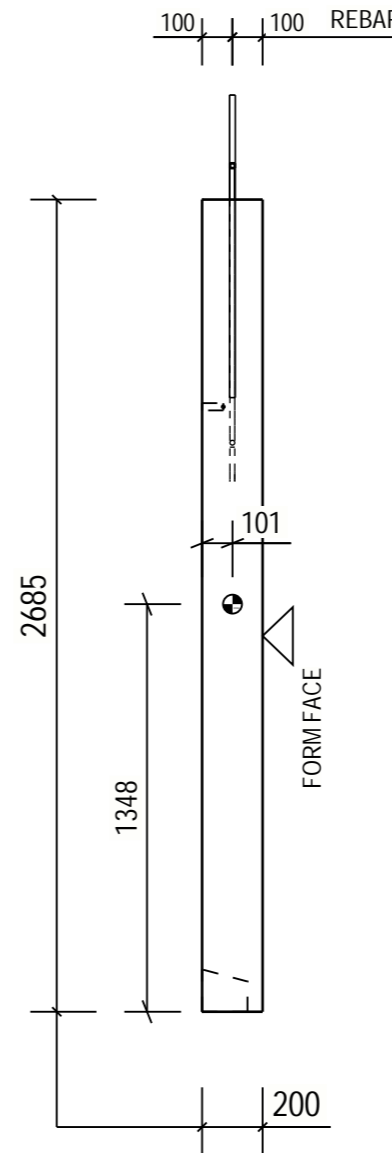
Concrete	C30/37	SFS-EN 206, SFS 7022
Concrete cover 1	25 mm ±10	
Max aggregate size	16mm	
Tolerance class	Measurement class, normal	Betonelementtien toleranssit, 2011
Surface treatment 1	Form face MUO-A	
Surface treatment 2	Casting face THI-A	
Lifting strength	C16/20	
Transport and erection strength	C25/30	
Reinforcement bar	T=B500B (SFS 1268), E=B600KX (SFS 1259)	
Reinforcement mesh	K=B500K (SFS 1257), E=B600KX (SFS 1259)	
Other steel materials:	S=S235JRG2 (SFS-EN 10025-2)	1.4301 (SFS-EN 10088, AISI 304)
tensile strength-/yield strengths:	B500B=550/500 MPa, B600KX 660/600MPa	S235JRG2=360/235 MPa, 1.4301=520/210MPa
Extension lengths:	T8-500, T10-650, T12-750, T16-1000	MESHES, 2 pitches
Maximum amount of chloride	SFS 7022	

Electrical installations: Betonelementtien sähköasennukset 2012
 Viewing direction shown in the plan drawing according to elements ID reading direction from inside to outside
 Normative reference: Wall elements: SFS 7026
 Center of Gravity :

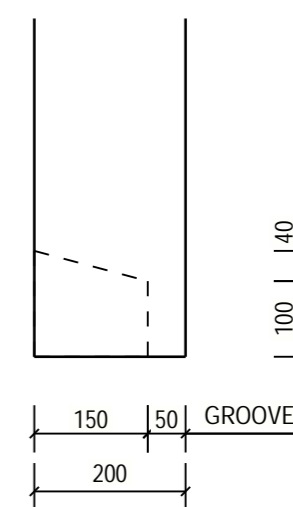
PROJECT NAME		DRAWING CONTENT		SCALES
		ELEMENT DRAWING		1:10
		V-1, PARTITION WALL		1:25
DRAWER	DESIGNER			
INITIALS	Education + Name			
CHECKER	ACCEPTOR			
Education + Name	Education + Name			
Designing office Address 12345 Helsinki 020 123 4567 www.office.com firstname.lastname@office.com		PROJECT NUMBER	SUB NUMBER	DWG. NO.
				V-1
		DESIGN GROUP	PAGE	DATE
		STR		20.03.2020
				REVISION



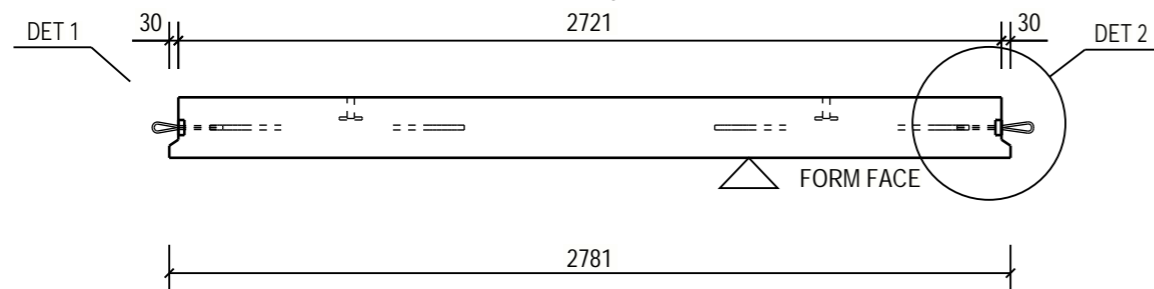
A - A
1:25



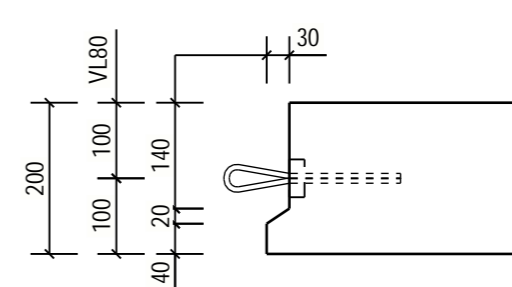
3 - 3
1:10



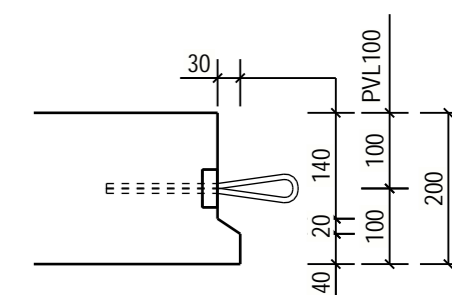
B - B
1:25
2721



DET 1

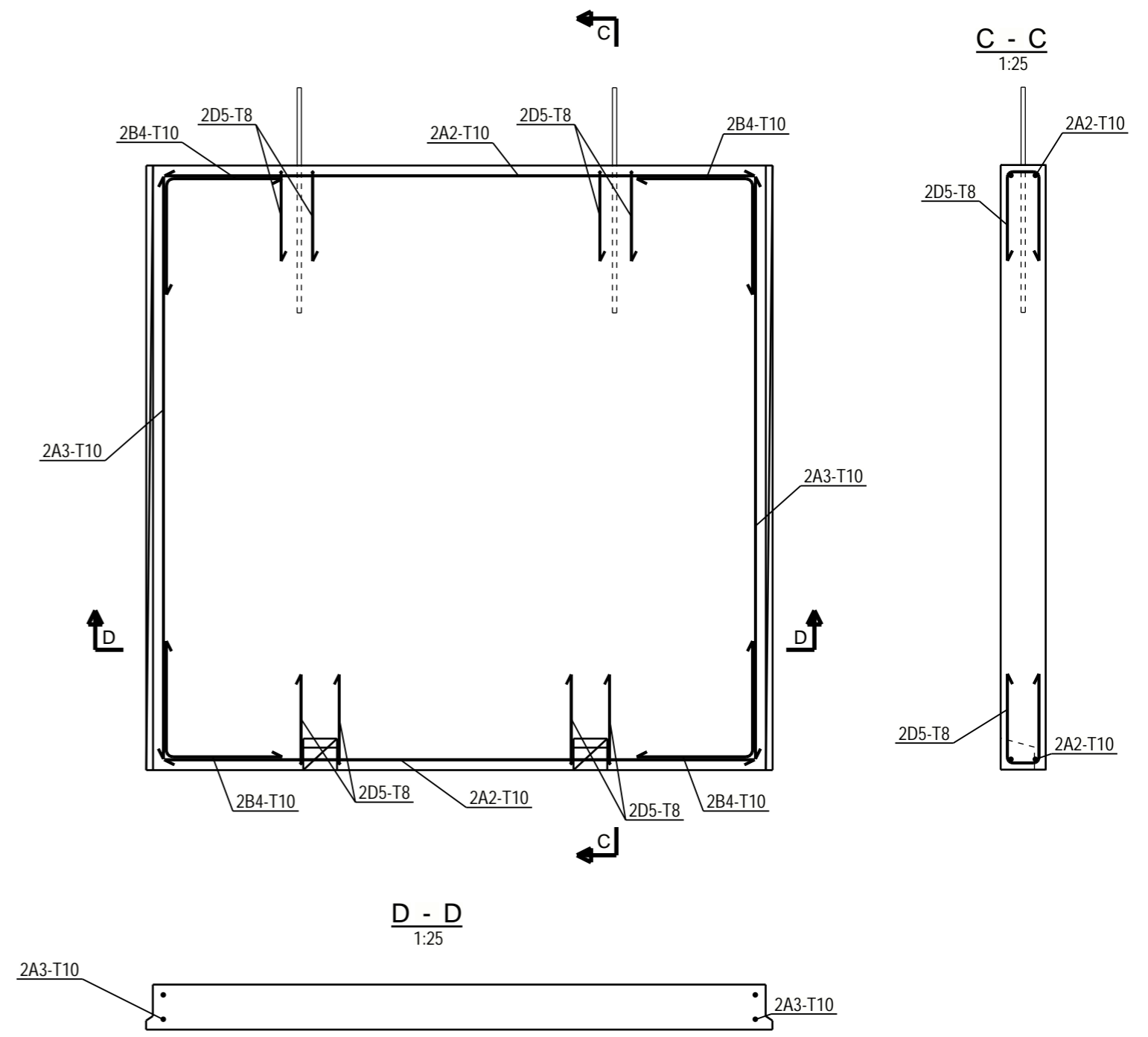


DET 2



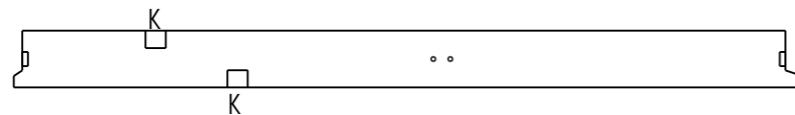
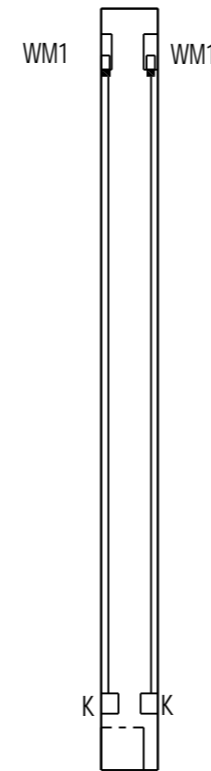
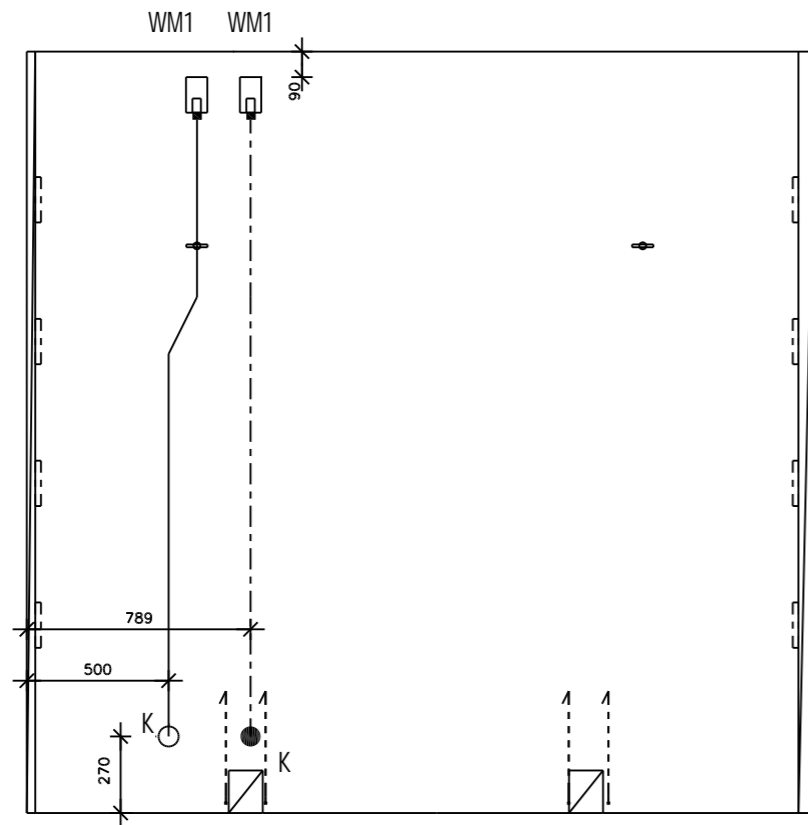
PROJECT NAME V-1	PROJECT NUMBER	SUB NUMBER	DWG. NO. V-1
	DESIGN GROUP RAK	PAGE 2 / 4	DATE 20.03.2020
			REVISI

REINFORCING BAR LIST																	
REINFORCING BARS				D	L	dL	WEIGHT	BENDING DIMENSIONS [mm]						COMMENT			
TYPE	POS	PCS	GRADE	[mm]	[mm]	[mm]	SUM [kg]	a	b	c	d	e	u	v	x	TD	
A	1	2	B500B	16	1000		3.2	1000									
A	2	4	B500B	10	2620		6.5	2621									
A	3	4	B500B	10	2580		6.4	2585									
B	4	8	B500B	10	1020		5.0	520	520							46	
D	5	8	B500B	8	910		2.9	400	150	400						36	
REINFORCING BAR TOTAL WEIGHT [kg]:																23.9	
REINFORCEMENT MESH LIST																	
REINFORCEMENT MESH TOTAL WEIGHT [kg]:																0.0	



PROJECT NAME	PROJECT NUMBER	SUB NUMBER	DWG. NO.
V-1	RAK	3 / 4	V-1
		DATE	REVISI
		20.03.2020	

FOR THE MARKING OF ELECTRICAL ACCESSORIES



ELECTRICITYDESIGNER
ADDRESS
PHONE
firstname.lastname@office.com

- K AU5.2 FIXING BOX
- J AU8 JUNCTION BOX SKREWS HORIZONTALLY
- AJ AJ5.20 TERMINAL BUSH + PROTECTIVE PLUG PMR38
OR BENDING CONTINUATION MODEL "EVA"
- V PMR490 MEDIATION C/C 85mm
BOXES WILL BE JOINED WITH MEDIATION PMR474
- W1 RESERVATION 200*200*100
- W2 RESERVATION 250*200*100
- W3 RESERVATION 320*200*100
- W4 RECESS LIST
- TJ BENDING CONTINUATION + PROTECTIVE PLUG

PIPE JM20, IF THERE IS NOT ANOTHER MARK.
THE PIPE IS ALWAYS TERMINATED IN THE TERMINAL SLEEVE.
MAXIMUM BENDING RADIUS OF PIPES 45 DEGREES.

- ON THE BACK SURFACE
- ON THE FRONT SURFACE

PROJECT NAME V-1	PROJECT NUMBER	SUB NUMBER	DWG. NO. V-1	
	DESIGN GROUP RAK	PAGE 4 / 4	DATE 20.03.2020	REVISI