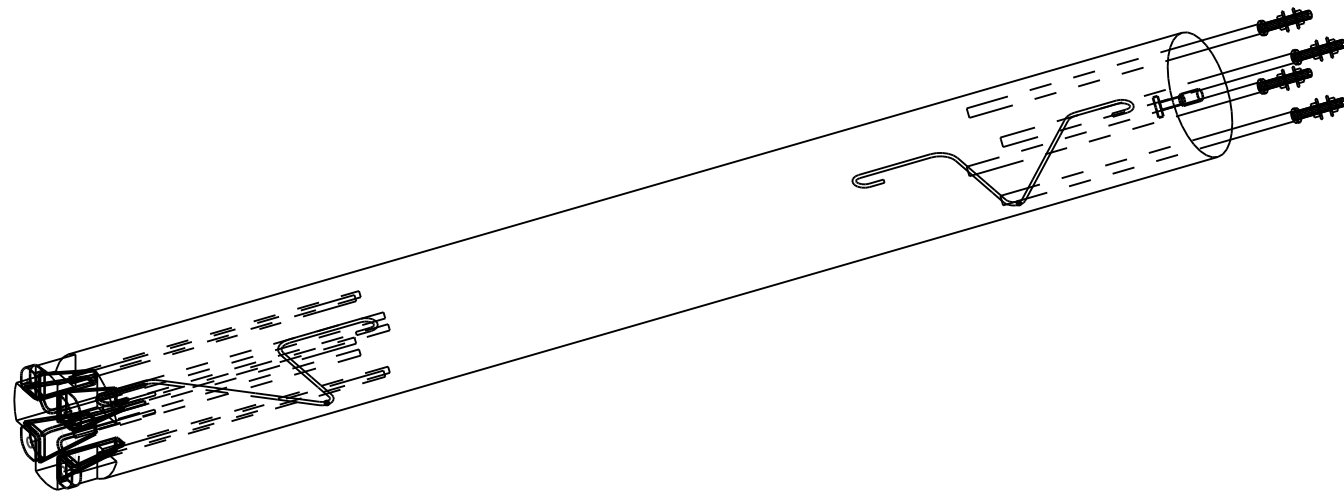


EMBED LIST			
CAST UNIT WEIGHT IS CALCULATED USING CONCRETE VOLUME AND DENSITY 2500 kg/m <sup>3</sup> + weight of embedded objects.			
ELEMENT POSITION	PCS	AREA [m <sup>2</sup> ]	
P-2	1	0.11	
CONCRETE	NAME	VALUE	UNIT
C35/45	COLUMN	0.44	m <sup>3</sup>
ELEMENT TOTAL WEIGHT:			1.11 t
VALUE	UNIT	EMBEDS	
4	pcs	HPKM24	
4	pcs	HPM24P	
2	pcs	NOSTOLENKKI S235J2+N Ø10, L = 1650, LISÄTAIVUTUS	
1	pcs	PLA24 Lifting system	
1.1	kg	B500B ø6	
12.9	kg	B500B ø8	
4.2	kg	B500B ø12	
71.6	kg	B500B ø16	

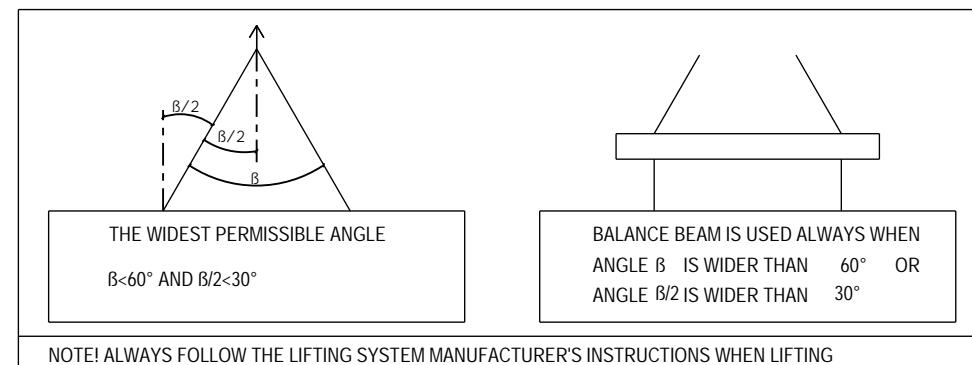
IF THE PRECAST MANUFACTURER WANTS TO REPLACE AN EMBED OR MATERIAL WITH ANOTHER, THE CONSTRUCTION/ELEMENT DESIGNER MUST APPROVE THE CHANGE BEFOREHAND



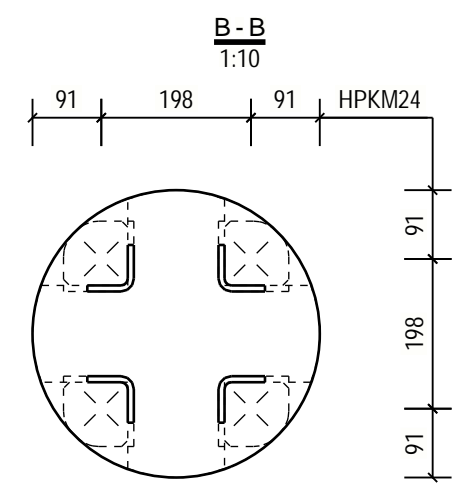
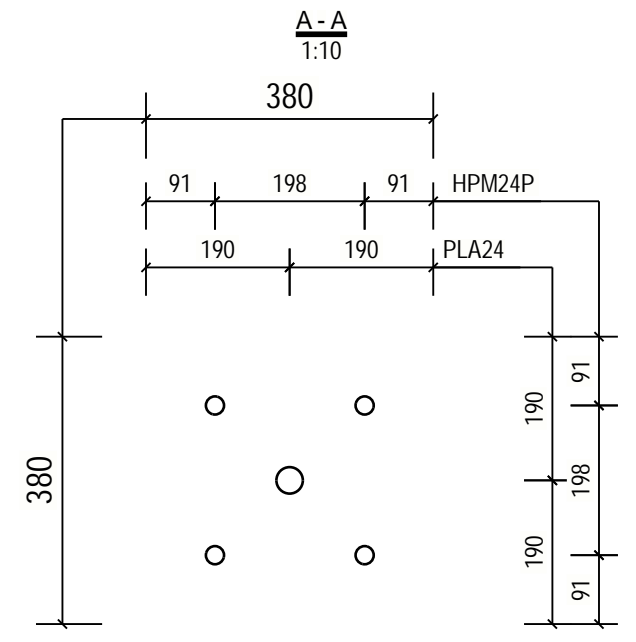
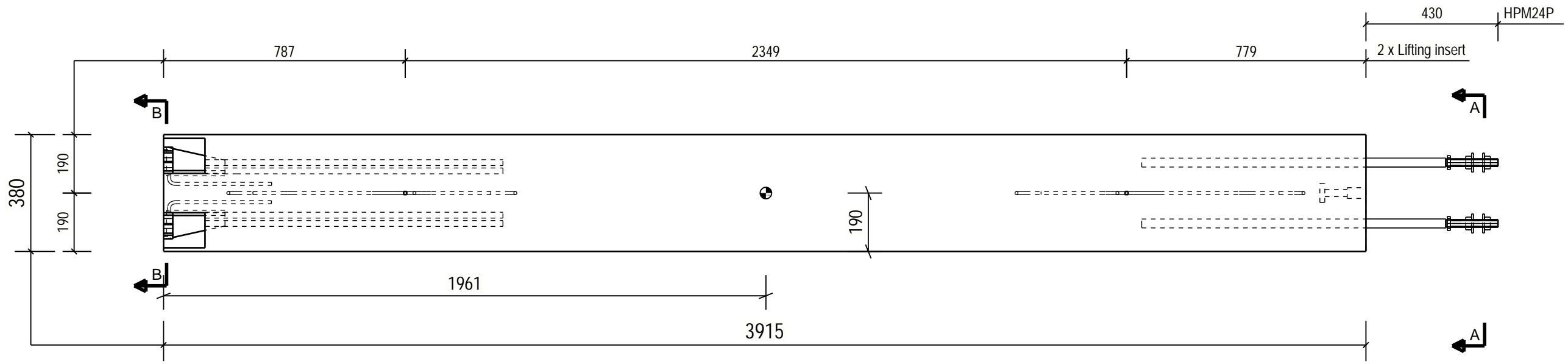
GENERAL INFORMATION			
Planned life time	100 Years		
Exposure class	XC1		SFS-EN 1992-1-1+NA
Fire resistance class	R60		
Consequence class	CC2		
PRODUCT INFORMATION			
Concrete	C30/37		SFS-EN 206, SFS 7022
Concrete cover 1	25 mm ±10		
Max aggregate size	16mm		
Tolerance class	Measurement class, normal		Betonielementtien toleranssit, 2011
Surface treatment 1	Painting		
Lifting strength	C20/25		
Transport and erection strength	C25/30		
Reinforcement bar	T=B500B (SFS 1268), E=B600KX (SFS 1259)		
Reinforcement mesh	K=B500K (SFS 1257), E=B600KX (SFS 1259)		
Other steel materials:	S=S235JRG2 (SFS-EN 10025-2)		1.4301 (SFS-EN 10088, AISI 304)
tensile strength-/yield strengths:	B500B=550/500 MPa, B600KX 660/600MPa		S235JRG2=360/235 MPa, 1.4301=520/210MPa
Extension lengths:	T8-500, T10-650, T12-750, T16-1000		Meshes, 2 pitches
Maximum amount of chloride	SFS 7022		

Viewing direction shown in the plan drawing according to elements ID reading direction de  
 Normative reference: Column- and beam elements: SFS 7026, SFS-EN 13225  
 Center of Gravity :

### LIFTING ANGLES

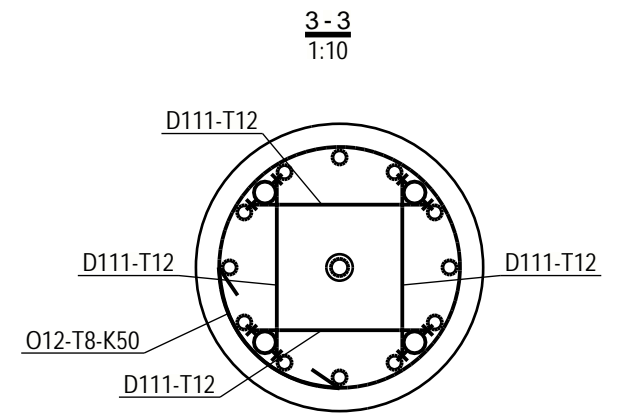
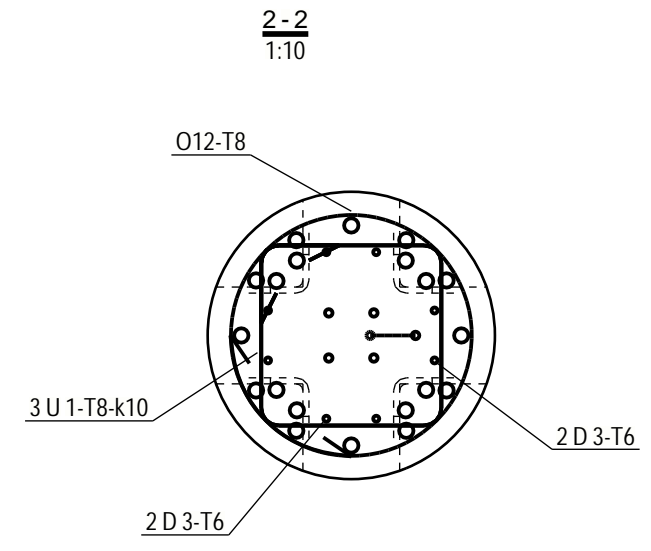
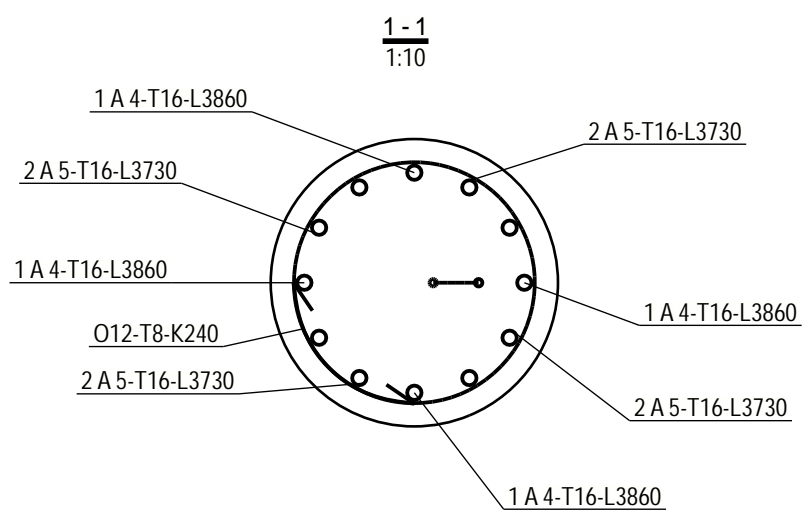
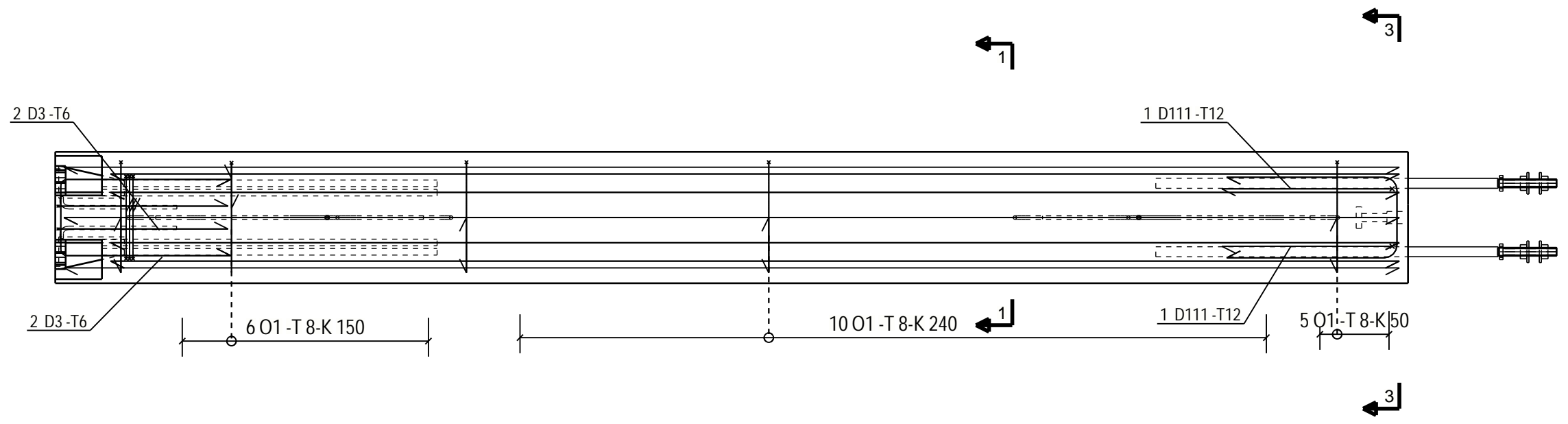


PROJECT NAME		DRAWING CONTENT		SCALES	
		ELEMENT DRAWING		1:10	
		P-2, COLUMN		1:15	
				1:20	
DRAWER	DESIGNER				
INITIALS	Education + Name				
CHECKER	ACCEPTOR				
Education + Name	Education + Name				
Designing office Address 12345 Helsinki 020 123 4567 www.office.com firstname.lastname@office.com		PROJECT NUMBER	SUB NUMBER	DWG. NO.	
				P-2	
		DESIGN GROUP	PAGE	DATE	REVISION
		STR		20.03.2020	



PROJECT NAME P-2	PROJECT NUMBER	SUB NUMBER	DWG. NO. P-2	
	DESIGN GROUP RAK	PAGE 2 / 3	DATE 20.03.2020	REVISI

REINFORCING BAR LIST																
REINFORCING BARS				D	L	dL	WEIGHT	BENDING DIMENSIONS [mm]								COMMENT
TYPE	POS	PCS	GRADE	[mm]	[mm]	[mm]	SUM [kg]	a	b	c	d	e	u	v	x	TD
U	1	3	B500B	8	1110		1.3	108	248	248						36
O1	2	23	B500B	8	1350		11.6	165	351							
D	3	4	B500B	6	1190		1.1	496	228	496						28
A	4	4	B500B	16	3860		24.4	3865								
A	5	8	B500B	16	3730		47.1	3730								
D	111	4	B500B	12	1190		4.2	500	247	500						60
REINFORCING BAR TOTAL WEIGHT [kg]:																89.8
REINFORCEMENT MESH LIST																
REINFORCEMENT MESH TOTAL WEIGHT [kg]:																0.0



PROJECT NAME P-2	PROJECT NUMBER	SUB NUMBER	DWG. NO. P-2	
	DESIGN GROUP RAK	PAGE 3 / 3	DATE 20.03.2020	REVISI