


EMBED LIST		
CAST UNIT WEIGHT IS CALCULATED USING CONCRETE VOLUME AND DENSITY 2500kg/m ³ + weight of embedded objects.		
ELEMENT POSITION	PCS	AREA [m ²]
K-1	1	10.12
CONCRETE	NAME	VALUE UNIT
C40/50	BEAM ELEMENT	6.68 m ³
ELEMENT TOTAL WEIGHT: 16.73 t		
VALUE	UNIT	EMBEDS
2.0	pcs	LIFTING INSERT S235J2+N Ø32, L = 4820, EXTRA BENDING
25.4	jm	NEOPRENE 20X20 SHORE 60
243.1	kg	B500B ø10
67.5	kg	B500B ø12
44.1	kg	B500B ø20
290.6	kg	B500B ø25
451.2	kg	B500B ø32

IF THE PRECAST MANUFACTURER WANTS TO REPLACE AN EMBED OR MATERIAL WITH ANOTHER, THE CONSTRUCTION/ELEMENT DESIGNER MUST APPROVE THE CHANGE BEFOREHAND.

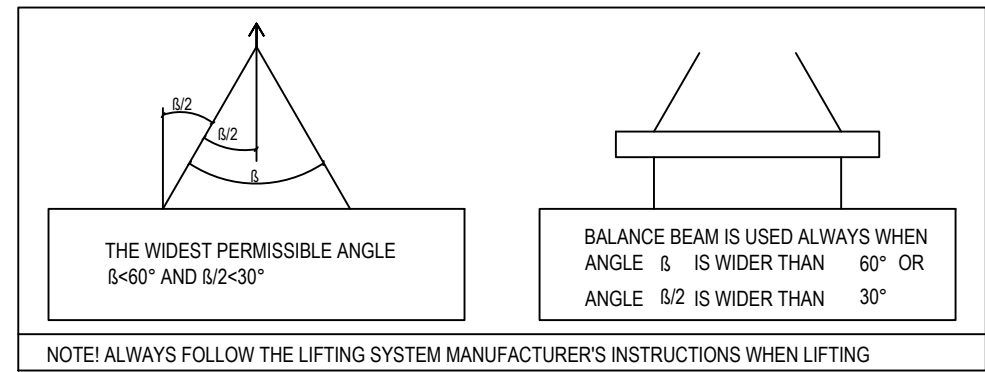
GENERAL INFORMATION		
Planned life time	50 years	
Exposure class	XC1	SFS-EN 1992-1-1+NA
Fire protection class	R60	
Consequence class	CC2	

PRODUCT INFORMATION		
Concrete	C30/37	SFS-EN 206, SFS 7022
Concrete cover 1	25 mm ±10	Nominal value of the concrete cover
Max aggregate size	16mm	
Tolerance class	Measurement class normal	Betonielementtien toleranssit, 2011
Surface treatment 1	Form face MUO-A	
Surface treatment 2	Casting face THI-A	
Chamfers 1	15x15 (V)	
Lifting strength	C16/20	
Transport and erection strength	C25/30	
Reinforcement bar	T=B500B (SFS 1268), E=B600KX (SFS 1259)	
Reinforcement mesh	K=B500K (SFS 1257), E=B600KX (SFS 1259)	
Other steel materials:	S=S235JRG2 (SFS-EN 10025-2) 1.4301 (SFS-EN 10088, AISI 304)	
tensile strength-/yield strengths:	B500B=550/500 MPa, B600KX 660/600MPa S235JRG2=360/235 MPa, 1.4301=520/210MPa	
Extension lengths:	T8-500, T10-650, T12-750, T16-1000 MESHES, 2 pitches	
Maximum amount of chloride	According SFS 7022	

Normative reference: BEAM AND COLUMN ELEMENTS: SFS 7026, SFS-EN 13225

Center of Gravity : 

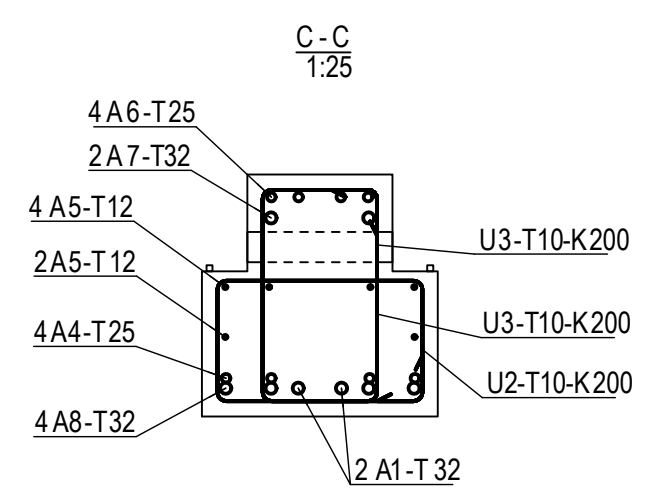
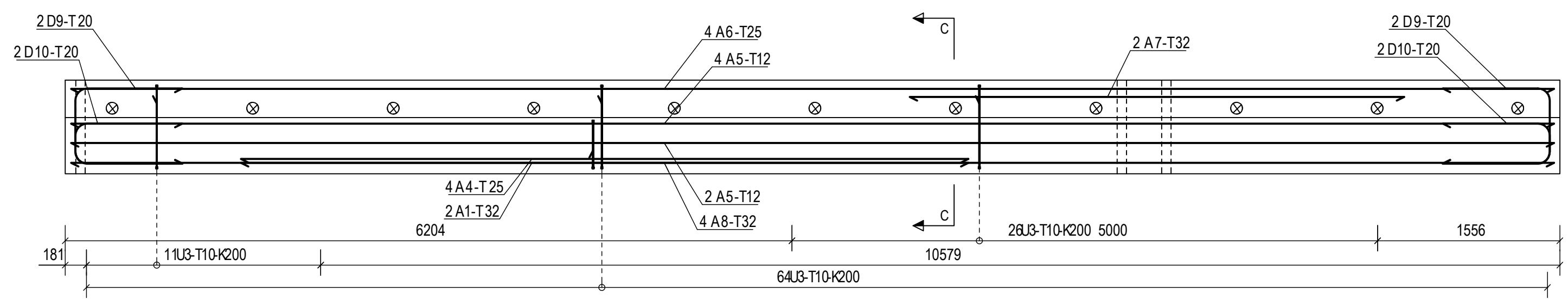
LIFTING ANGLES



PROJECT NAME		DRAWING CONTENT		SCALES
		ELEMENT DRAWING		1:25
		K-1, BEAM		1:35
				1:40
DRAWER	DESIGNER			
INITIALS	Education + Name			
CHECKER	ACCEPTOR			
Education + Name	Education + Name			
Designing office Address PO Box Phone firstname.lastname@office.com		PROJECT NUMBER	SUB NUMBER	DWG. NO.
				K-1
www.office.com		DESIGN GROUP	PAGE	DATE
		STR	1 / 3	20.03.2020
				REVISION

REINFORCING BARS														0		
TYPE	POS	PCS	GRADE	D [mm]	L [mm]	dL [mm]	WEIGHT SUM [kg]	BENDING DIMENSIONS [mm]						KOMMENTTI		
								a	b	c	d	e	u	v	x	TD
A	1	2	B500B	32	6210		78.4	6210								
U	2	64	B500B	10	2390		94.3	155	690	410						46
U	3	101	B500B	10	2390		148.8	155	710	390						46
A	4	4	B500B	25	6210		95.6	6210								
A	5	6	B500B	12	12660		67.5	12660								
A	6	4	B500B	25	12660		195.0	12660								
A	7	2	B500B	32	4220		53.3	4220								
A	8	4	B500B	32	12660		319.5	12660								
D	9	4	B500B	20	2380		23.5	925	665	925						180
D	10	4	B500B	20	2080		20.6	925	365	925						180
REINFORCING BAR TOTAL WEIGHT [kg]:															1096.4	
REINFORCEMENT MESH LIST																
REINFORCEMENT MESH TOTAL WEIGHT [kg]:															0.0	

REINFORCEMENT EXAMPLE



PROJECT NAME K-1	PROJECT NUMBER	SUB NUMBER	DWG. NO. K-1	
	DESIGN GROUP STR	PAGE 3 / 3	DATE 20.03.2020	REVISION