


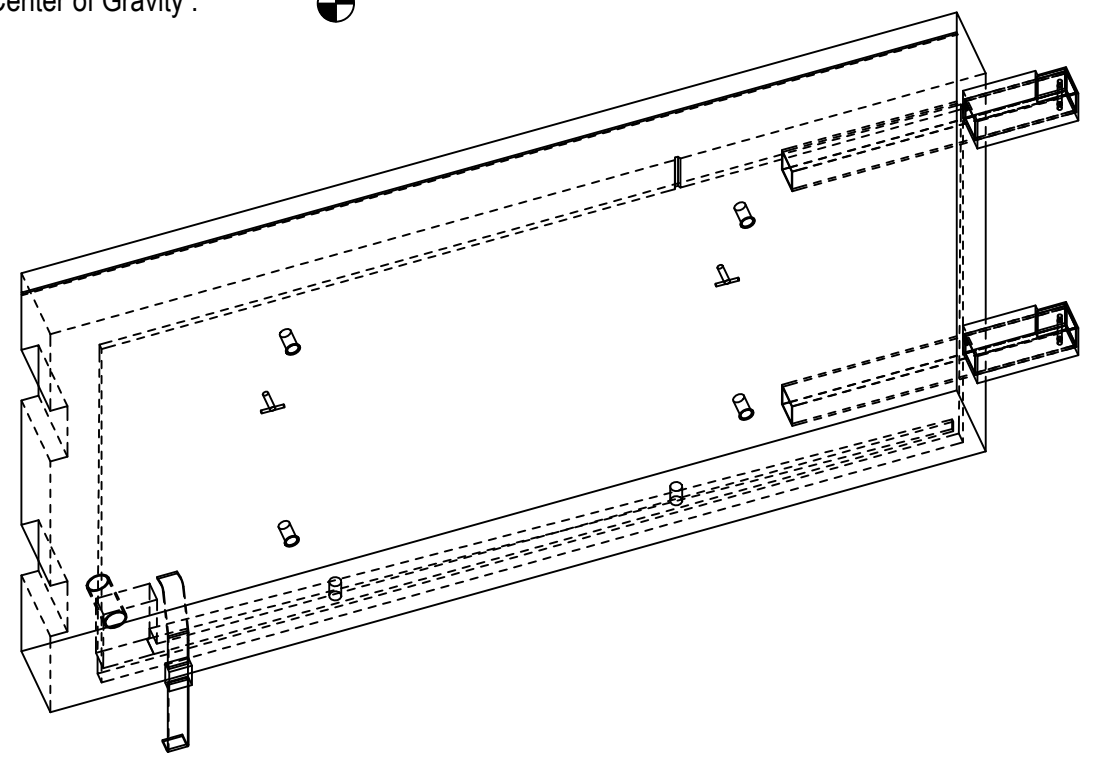
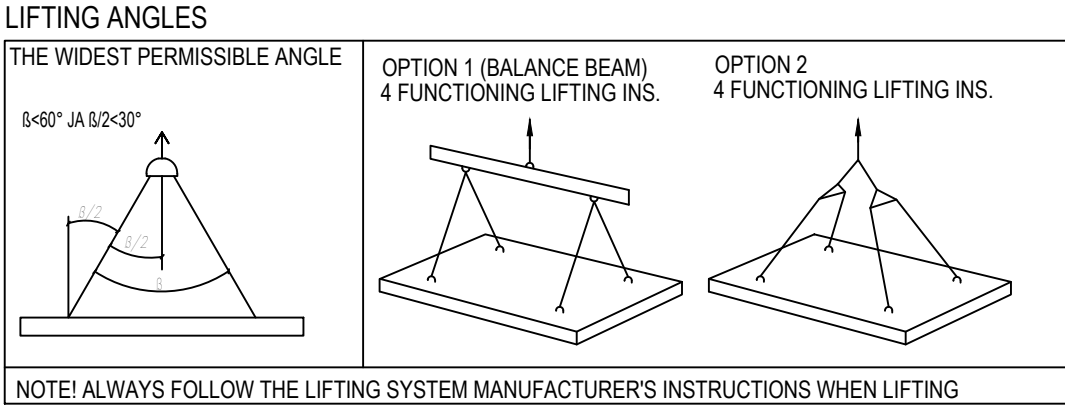
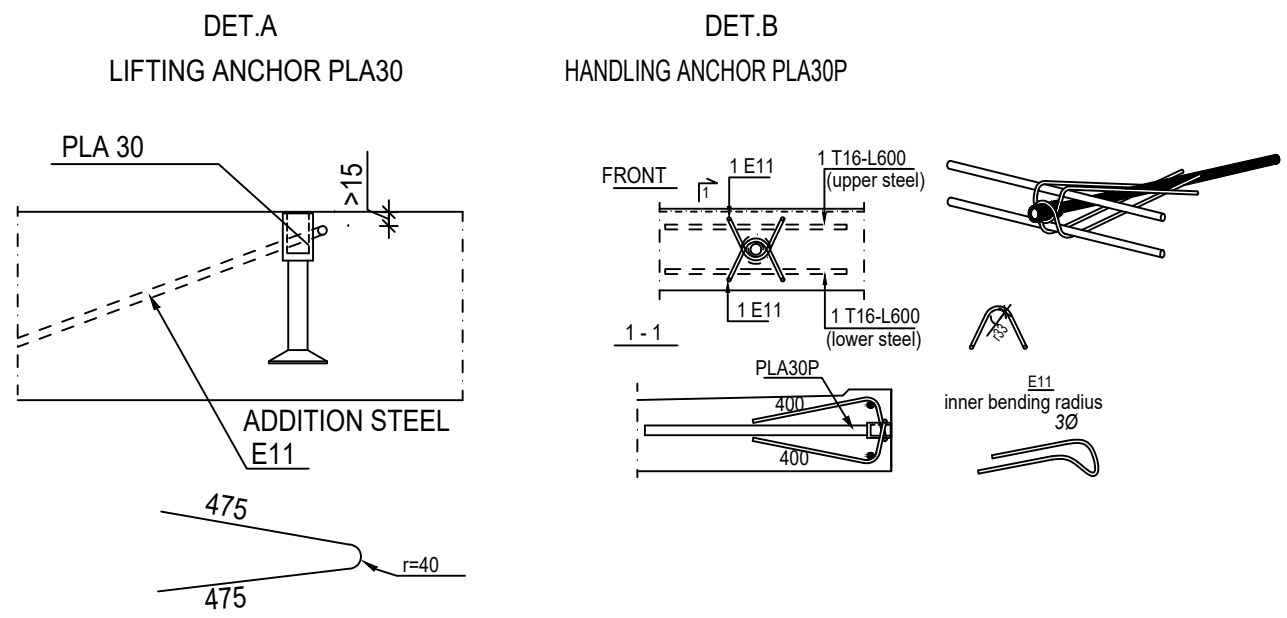
EMBED LIST		
CAST UNIT WEIGHT IS CALCULATED USING CONCRETE VOLUME AND DENSITY 2500kg/m3 + weight of embedded objects.		
ELEMENT POSITION	PCS	AREA [m2]
CL-1	1	6.37
CONCRETE	NAME	VALUE UNIT
C35/45	BALCONY SLAB	1.62 m <sup>3</sup>
<b>ELEMENT TOTAL WEIGHT: 4.05 t</b>		
VALUE	UNIT	EMBEDS
4.0	kpl	PLA30
2.0	kpl	PLA30P Stainless
1.0	kpl	PS170 Balcony slab connector
2.0	kpl	Vemo VASBR M16x70 1.4305
2.0	kpl	STAINLESS - PIPE BEAM CFRHS100X100X5 L=1000mm STALA 350
1.0	kpl	VESIVEK VEK-82/73 Ø80X5 L=170mm 1.4301
2.0	kpl	NEOPRENE
28.5	kg	#8-150 8-150-1705/3202 B500K
47.6	kg	#10-150 10-150-1855/3202 B500K
20.1	kg	B500B ø8
27.7	kg	B500B ø10
3.8	kg	B500B ø16
2.5	kg	B600KX ø5
12.0	kg	B600KX ø7
0.6	kg	B600KX ø9
7.5	kg	B600KX ø11

GENERAL INFORMATION		
Planned life time	50v	
Exposure class	UPPER SURFACE: XC4-XS1-XF1	SFS-EN 1992-1-1+NA
	LOWER SURFACE: XC3-XS1-XF1	
Fire resistance class	R60	
Consequence class	CC2	

PRODUCT INFORMATION		
Concrete	C35/45	SFS-EN 206, SFS 7022
Concrete cover 1	25 mm ±10 (Stainless)	B600KX
Concrete cover 2	40 mm ±10	B500B
Max aggregate size	16mm	
Tolerance class	Measurement class, normal	Betonelementtien toleranssit, 2011
Surface treatment 1	Form face MUO-A	Fine wash PESH-A
Surface treatment 2	Casting face TEL -A	According to plans
Chamfers 1	Pencil rounding on visible edges (kp)	
Lifting strength	C20/25	
Transport and erection strength	C30/37	
Reinforcement bar	T=B500B (SFS 1268), E=B600KX (SFS 1259)	
Reinforcement mesh	K=B500K (SFS 1257), E=B600KX (SFS 1259)	
Other steel materials:	S=S235JRG2 (SFS-EN 10025-2) 1.4301 (SFS-EN 10088, AISI 304)	
tensile strength-/yield strengths:	B500B=550/500 MPa, B600KX 660/600MPa S235JRG2=360/235 MPa, 1.4301=520/210MPa	
Extension lengths:	T8-500, T10-650, T12-750, T16-1000 MESHES, 2 pitches	
Maximum amount of chloride	SFS 7022	

IF THE PRECAST MANUFACTURER WANTS TO REPLACE AN EMBED OR MATERIAL WITH ANOTHER, THE CONSTRUCTION/ELEMENT DESIGNER MUST APPROVE THE CHANGE BEFOREHAND.

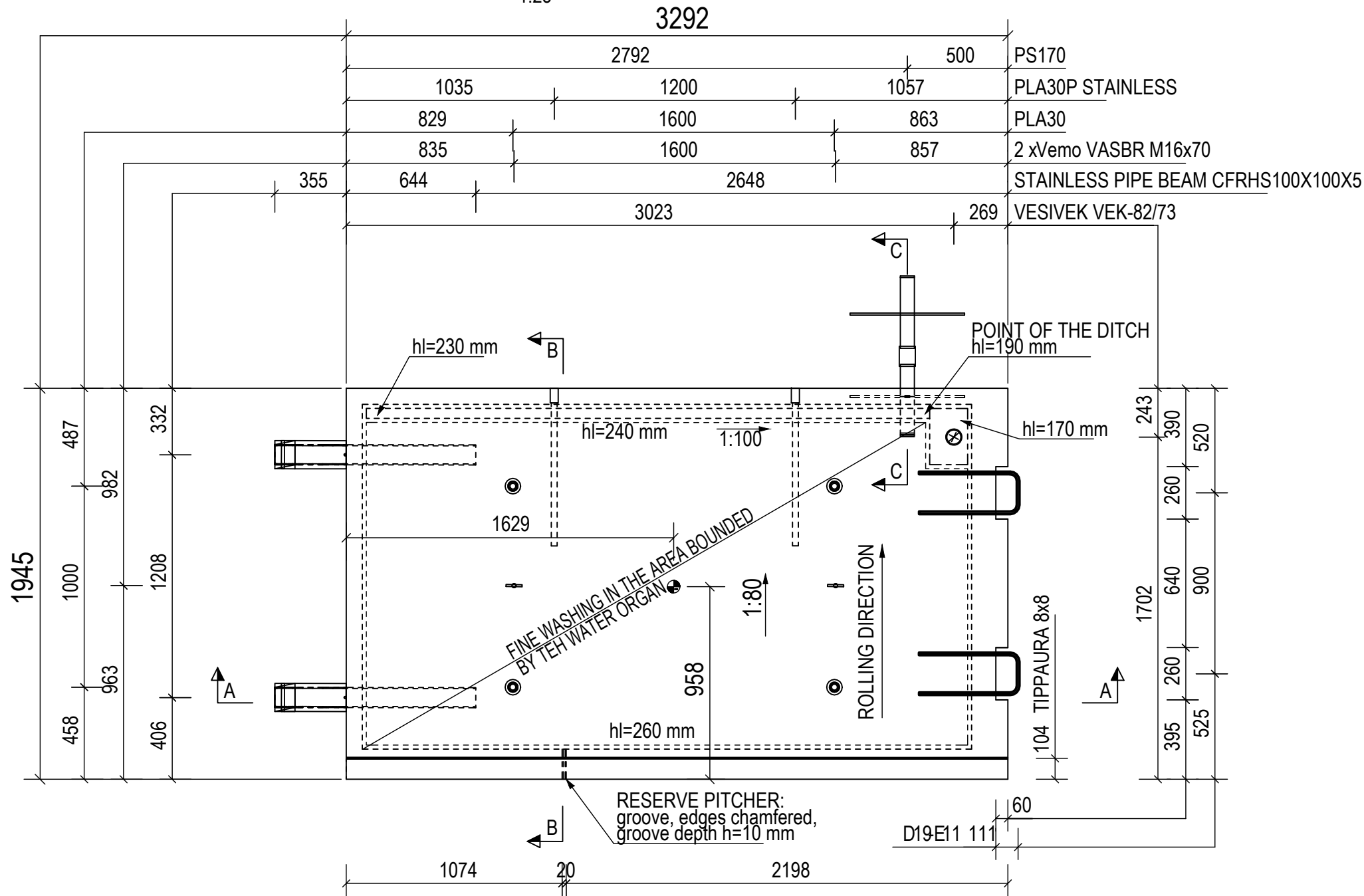
Center of Gravity : 



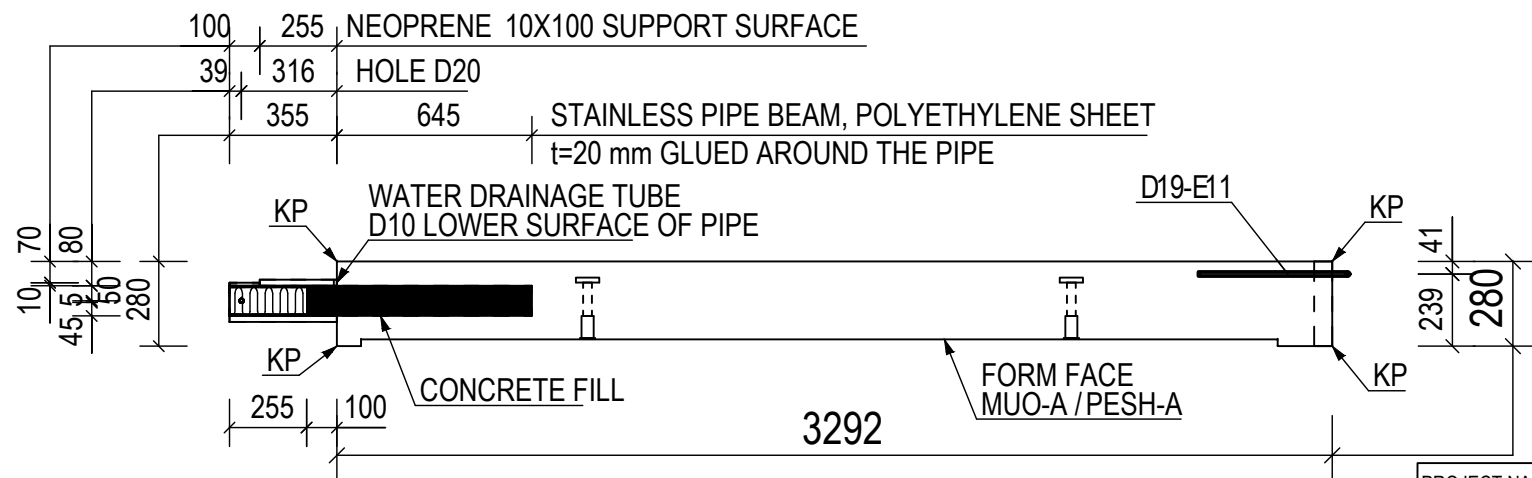
PROJECT NAME		DRAWING CONTENT		SCALES	
		ELEMENT DRAWING CL-1, BALCONY SLAB		1:10 1:25	
DRAWER	DESIGNER	PROJECT NUMBER		SUB NUMBER	
INITIALS	Education + Name				
CHECKER	ACCEPTOR	DWG. NO.		CL-1	
Education + Name	Education + Name	DESIGN GROUP		PAGE	
		STR		1 / 4	
www.office.com		Date		20.03.2020	
firstname.lastname@office.com		REVISION			

# VIEW FROM THE INSIDE

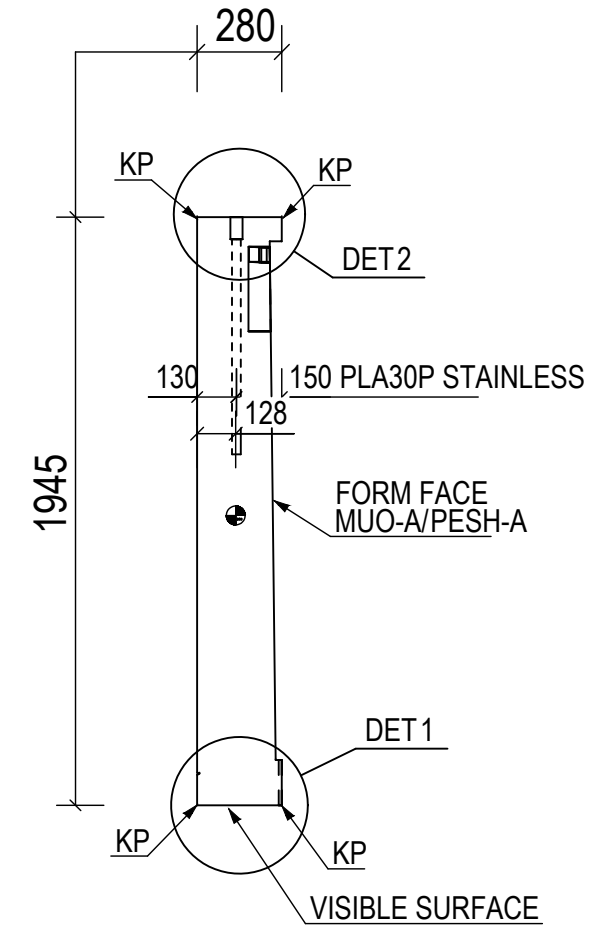
1:25



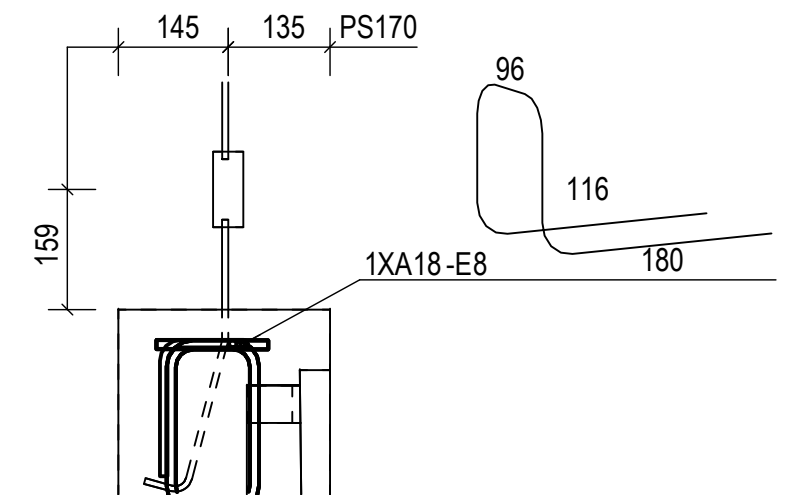
**A-A**  
1:25



**B-B**  
1:25



**C-C**  
1:10



PROJECT NAME

CL-1

PROJECT NUMBER

DESIGN GROUP  
STR

SUB NUMBER

PAGE  
2 / 4

DWG. NO.

CL-1

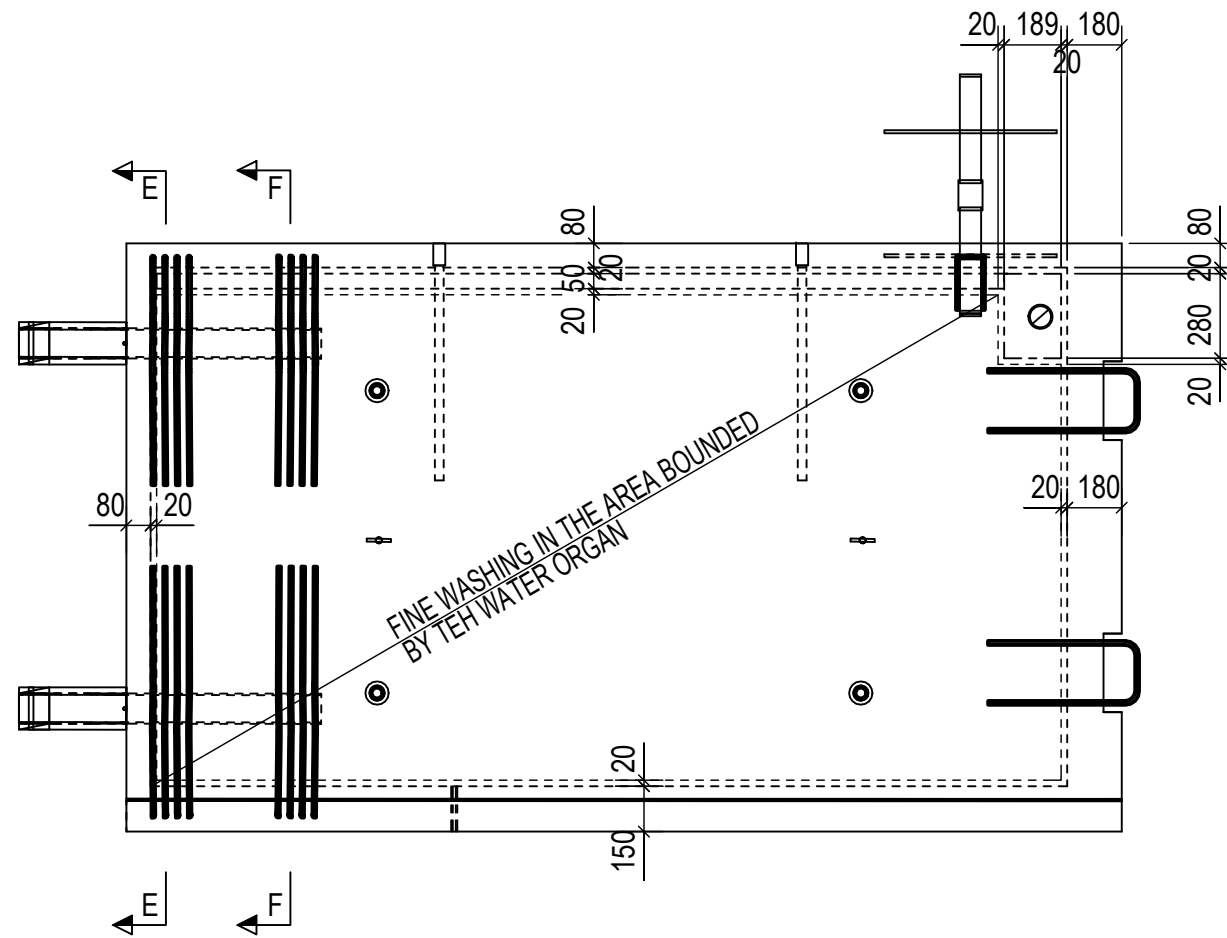
DATE

20.03.2020

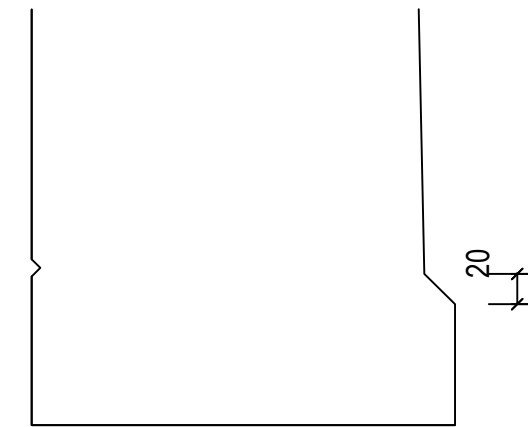
REVISION

# DIMENSION OF THE CUP PART

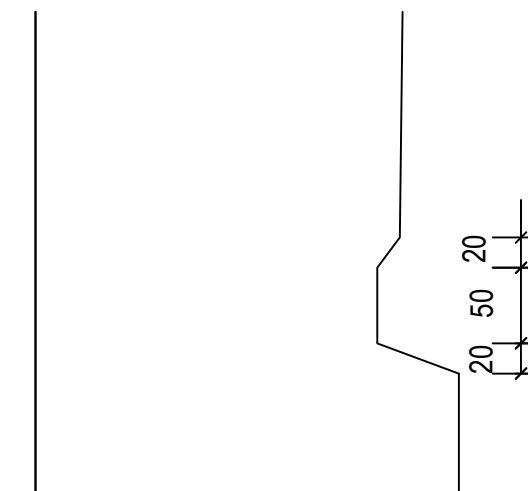
1:25



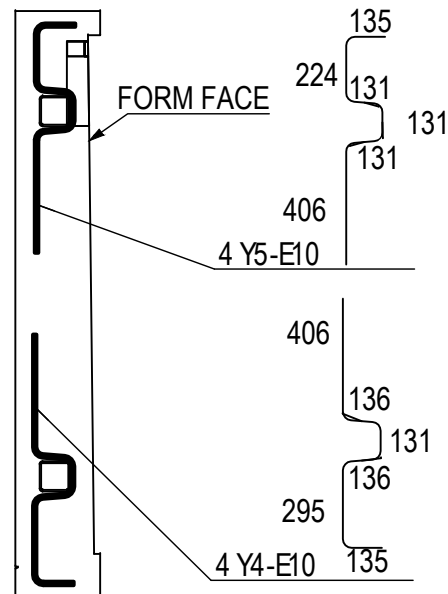
DETAIL1  
1:5



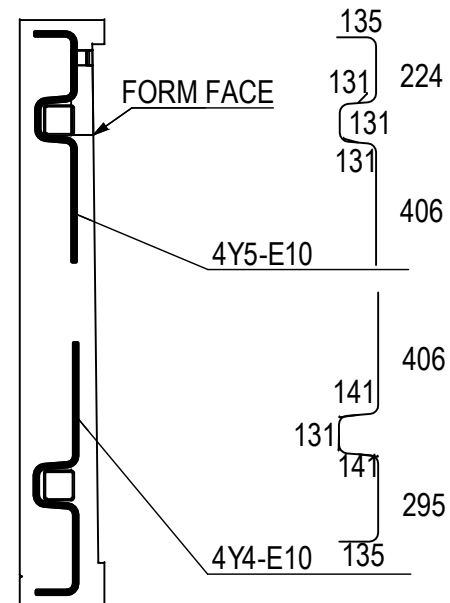
DETAIL2  
1:5



E-E  
1:25



F-F  
1:25



PROJECT NAME	PROJECT NUMBER	SUB NUMBER	DWG. NO. <b>CL-1</b>	
<b>CL-1</b>	DESIGN GROUP <b>STR</b>	PAGE <b>3 / 4</b>	DATE <b>20.03.2020</b>	REVISION

## REINFORCING BAR LIST

REINFORCING BARS		D	L	dL	WEIGHT	BENDING DIMENSIONS [mm]										COMMENT
TYPE	POS	PCS	GRADE	[mm]	[mm]	SUM [kg]	a	b	c	d	e	u	v	x	TD	
Y	2	4	B600KX	11	980	2.9										
A	3	4	B500B	16	600	3.8	600									
Y	4	8	B500B	10	1130	5.6										
Y	5	8	B500B	10	1050	5.2										
B	6	2	B600KX	7	3720	2.2	3142	600							42	
D	7	2	B500B	10	1210	1.5	600	262	400						46	
B	8	2	B500B	10	3740	4.6	3162	600							46	
B	9	2	B500B	10	2410	3.0	1835	600							46	
D	12	22	B600KX	7	1500	9.8	800	138	600						42	
				...	1450	2	...	800	92	600						
Y	13	21	B600KX	5	780	2.5										
D	14	1	B600KX	9	1250	0.6	600	300	403						54	
B	15	2	B500B	10	1880	2.3	1803	100							46	
D	16	2	B500B	10	1310	1.6	400	560	400						46	
A	17	1	B500B	10	3190	2.0	3193									
XA	18	1	B500B	8	610	0.2	180	116	96	116	180				36	
D	19	2	B600KX	11	1150	1.7	500	211	500						66	
A	20	1	B500B	10	3140	1.9	3142									
D	21	23	B500B	8	1110	10.1	500	150	500						36	
D	22	22	B500B	8	1130	9.8	500	165	500						36	
K	23	4	B600KX	11	970	2.9	475	475	22					70		

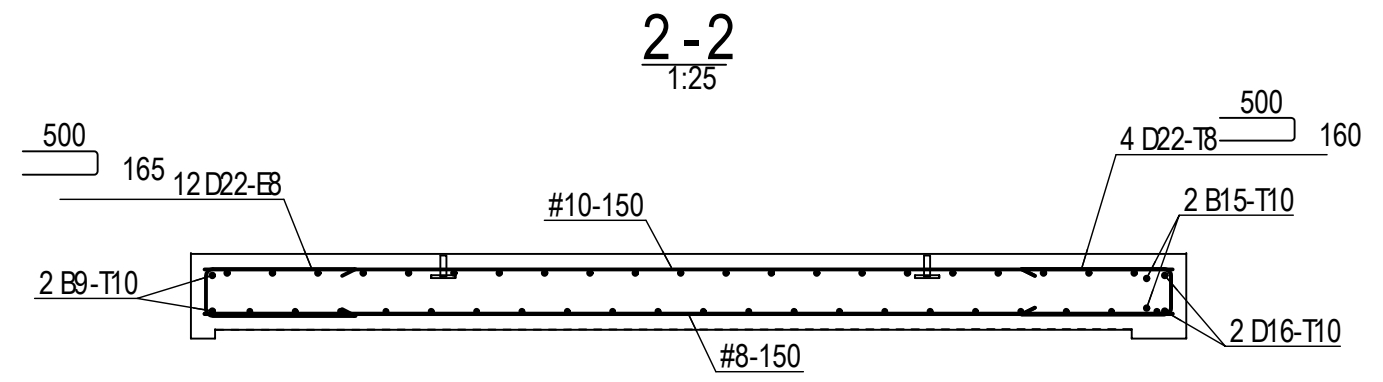
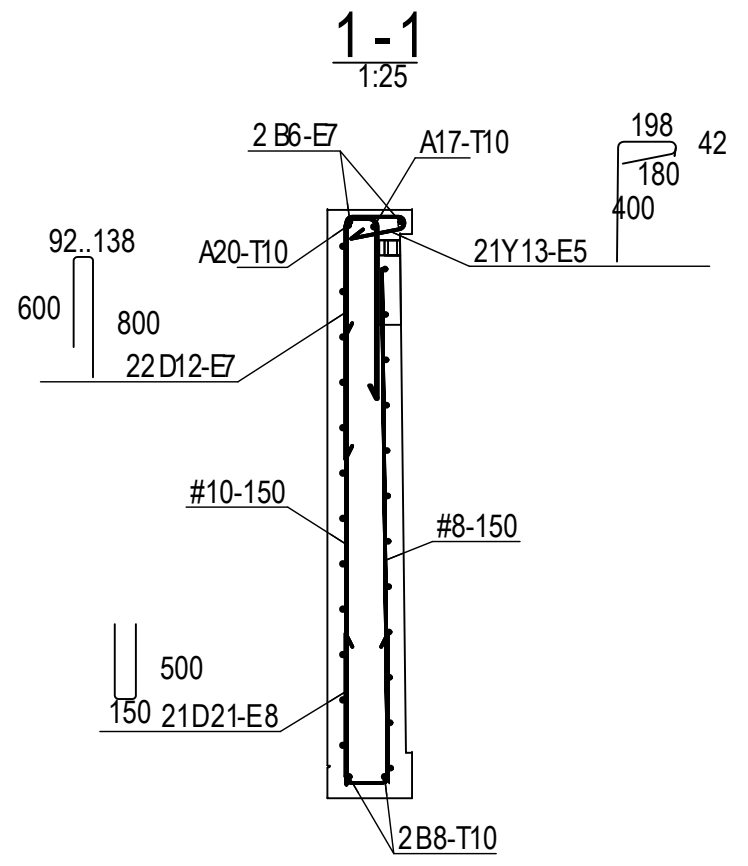
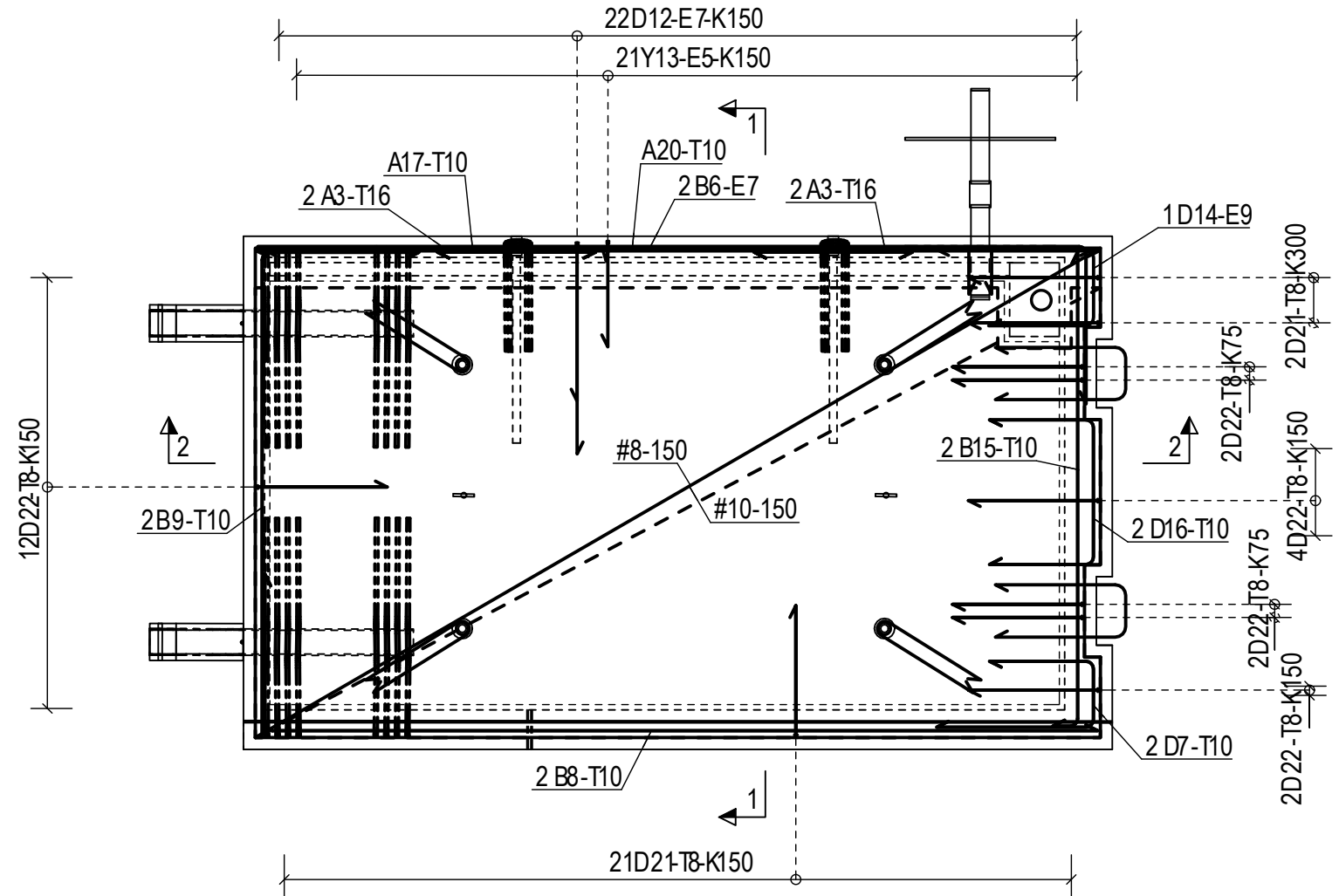
REINFORCING BAR TOTAL WEIGHT [kg]: 74.4

## REINFORCEMENT MESH LIST

POS	PCS	GRADE	SIZE	NAME	kg/MESH	kg/SUM
CL-10	1	B500K	3202 x 1705	#8-150	28.5	28.5
CL-11	1	B500K	3202 x 1855	#10-150	47.6	47.6

REINFORCEMENT MESH TOTAL WEIGHT [kg]: 76.1

## REINFORCEMENT EXAMPLE



PROJECT NAME	PROJECT NUMBER	SUB NUMBER	DWG. NO.	
CL-1			CL-1	
DESIGN GROUP	PAGE	DATE	REVISION	
STR	4 / 4	20.03.2020		