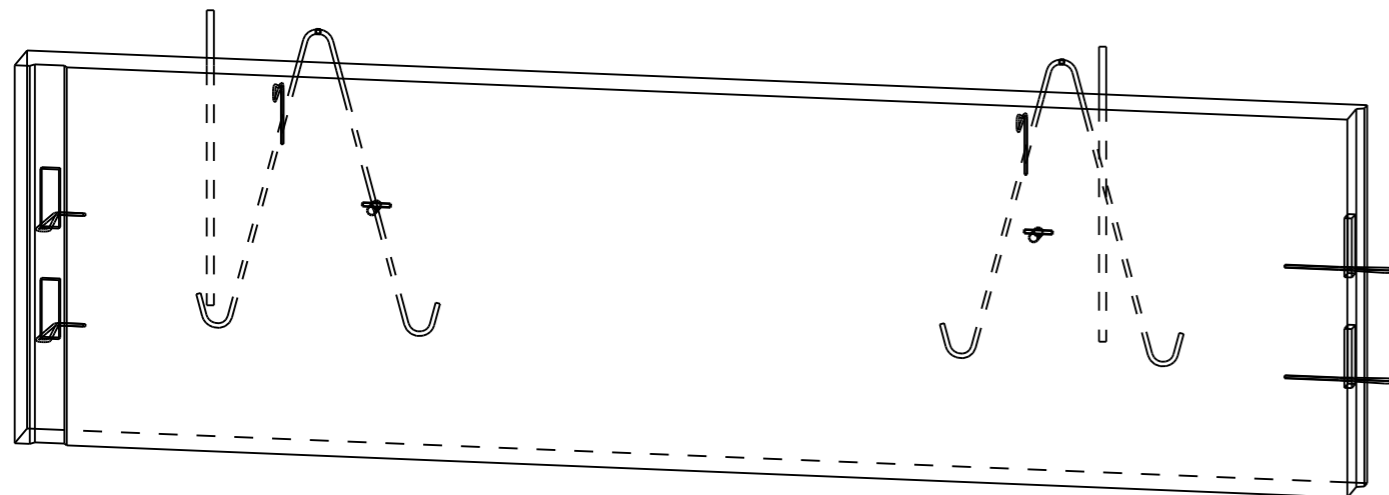
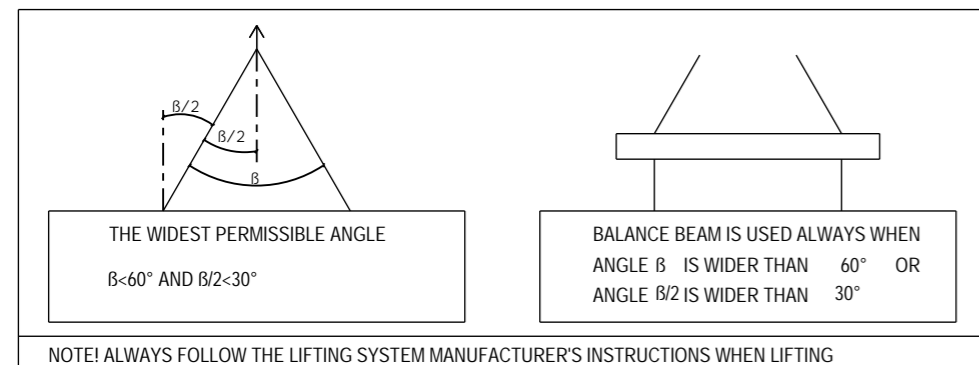


EMBED LIST			
CAST UNIT WEIGHT IS CALCULATED USING CONCRETE VOLUME AND DENSITY 2500 kg/m ³ + weight of embedded objects.			
ELEMENT POSITION	PCS	AREA [m ²]	
AV-1	1	3.69	
CONCRETE	NAME	VALUE	UNIT
C30/37	GROUND PRESSURE SOCLE	0.66	m ³
ELEMENT TOTAL WEIGHT:			1.66 t
VALUE	UNIT	EMBEDS	
2	pcs	PINTOS_SA_12 S235JR	
4	pcs	PVL100	
2	pcs	Vemo RV M16x70 S235JR+AR	
2	Pcs	PASI-400	
13.0	kg	#8-200 8-200.0-915/3493 B500K	
13.3	kg	B500B ø8	
14.0	kg	B500B ø10	
2.5	kg	B500B ø16	

IF THE PRECAST MANUFACTURER WANTS TO REPLACE AN EMBED OR MATERIAL WITH ANOTHER, THE CONSTRUCTION/ELEMENT DESIGNER MUST APPROVE THE CHANGE BEFOREHAND



LIFTING ANGLES



GENERAL INFORMATION

Planned life time	50 Years	
Exposure class	XC3	SFS-EN 1992-1-1+NA
Fire resistance class	R60	
Consequence class	CC2	

PRODUCT INFORMATION

Concrete	C30/37	SFS-EN 206, SFS 7022
Concrete cover 1	35mm ±10	
Max aggregate size	16mm	
Tolerance class	Measurement class, normal	Betonelementtien toleranssit, 2011
Surface treatment 1	Form face MUO-A	
Surface treatment 2	Casting face THI-A	
Chamfers 1	Pencil rounding on visible edges (kp)	
Lifting strength	C16/20	
Transport and erection strength	C25/30	
Reinforcement bar	T=B500B (SFS 1268), E=B600KX (SFS 1259)	
Reinforcement mesh	K=B500K (SFS 1257), E=B600KX (SFS 1259)	
Other steel materials:	S=S235JRG2 (SFS-EN 10025-2)	1.4301 (SFS-EN 10088, AISI 304)
tensile strength-/yield strengths:	B500B=550/500 MPa, B600KX 660/600MPa	S235JRG2=360/235 MPa, 1.4301=520/210MPa
Extension lengths:	T8-500, T10-650, T12-750, T16-1000	MESHES, 2 pitches
Maximum amount of chloride	SFS 7022	

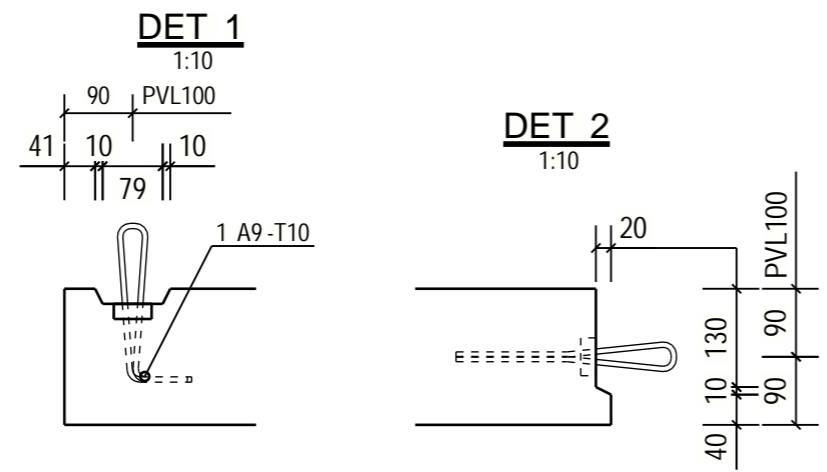
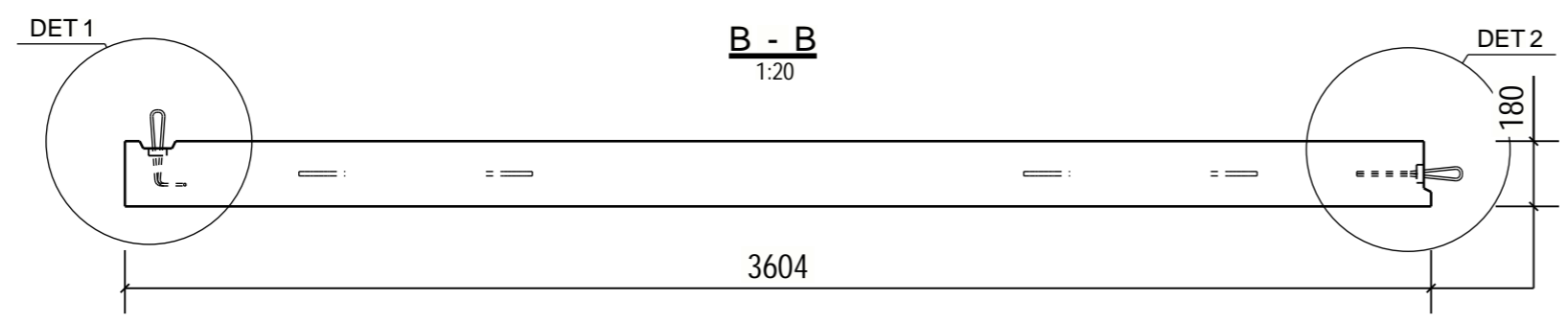
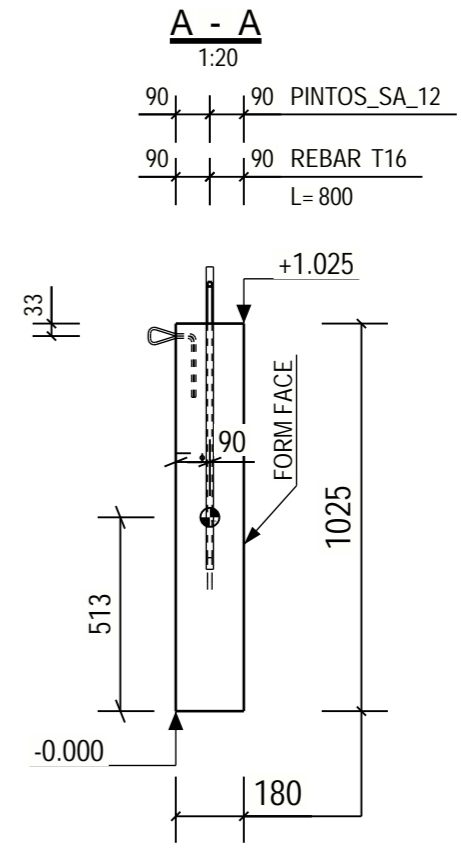
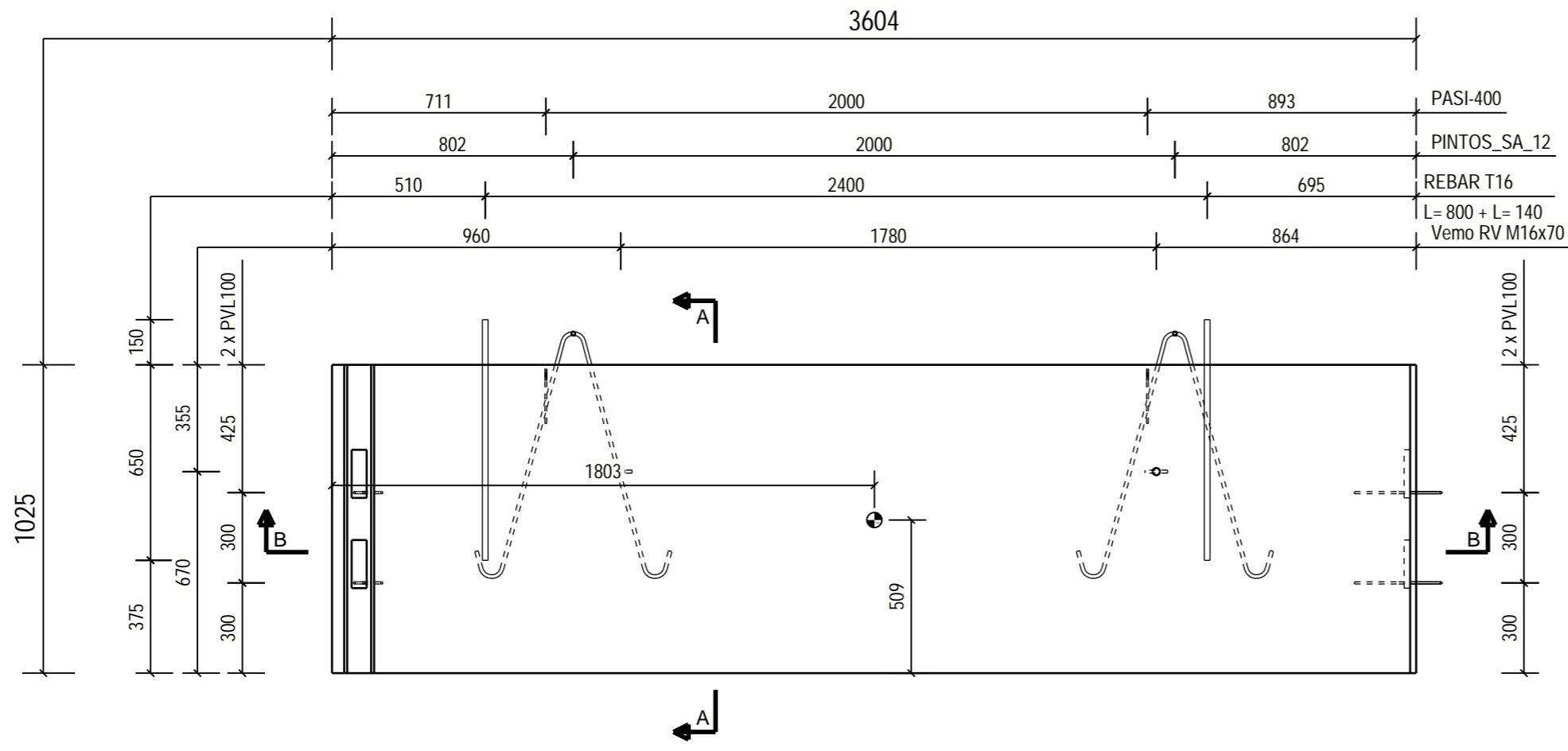
Electrical installations: Betonelementtien sähköasennukset 2012

Viewing direction shown in the plan drawing according to elements ID reading direction from inside to outside

Normative reference: Wall elements: SFS 7026

Center of Gravity :

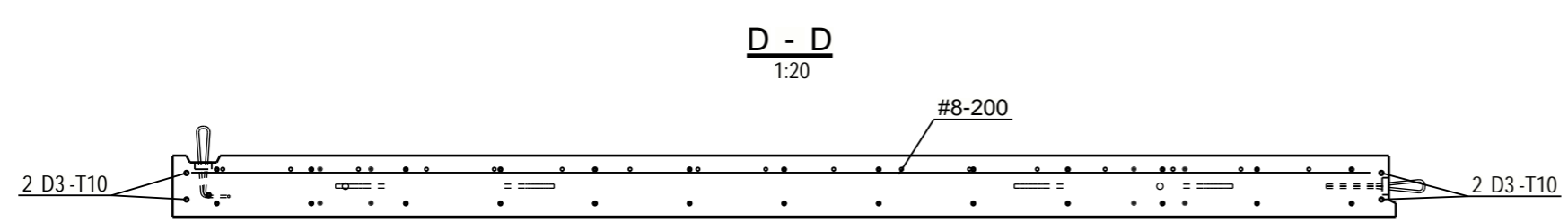
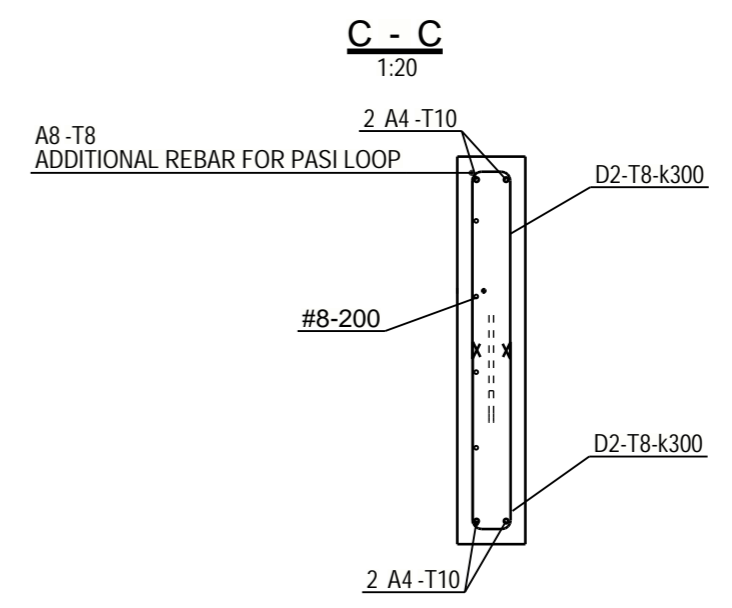
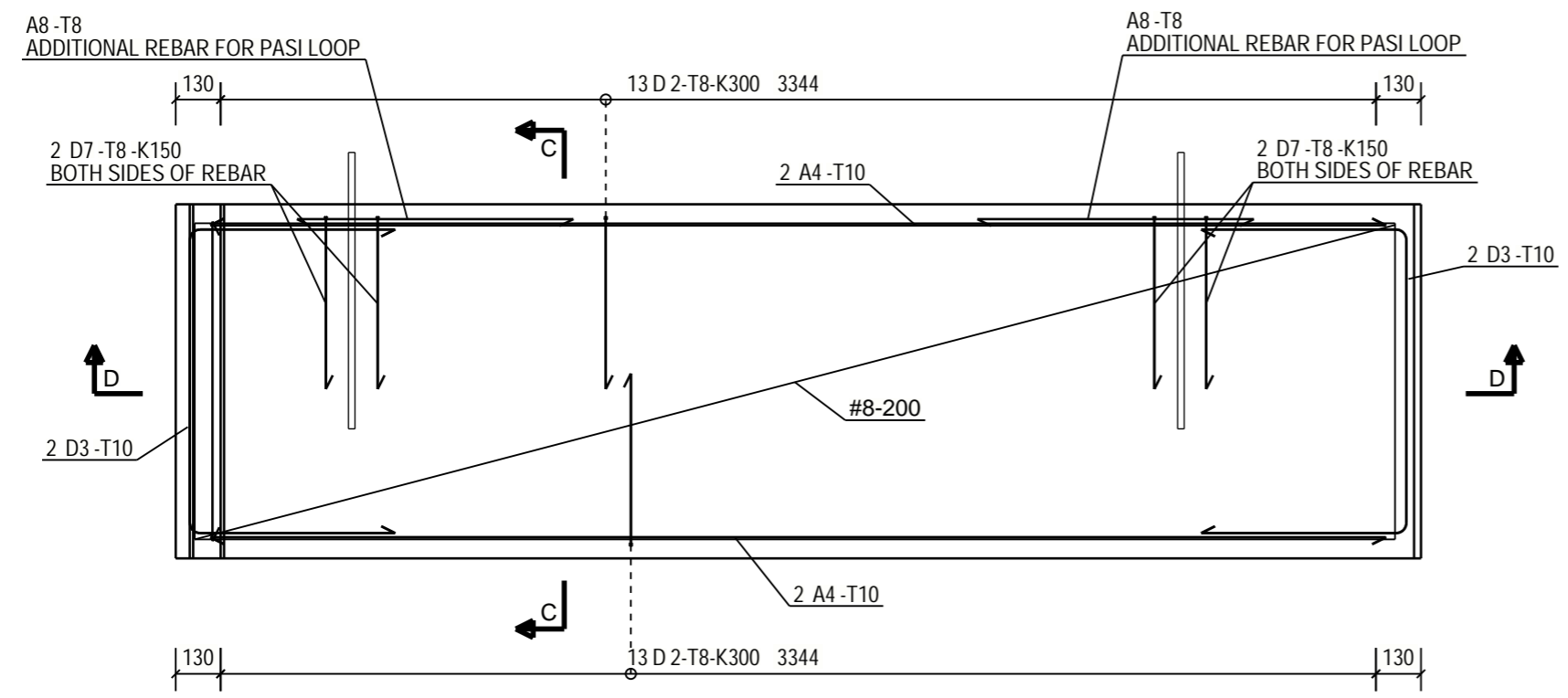
PROJECT NAME		DRAWING CONTENT		SCALES
		ELEMENT DRAWING		1:10
		AV-1, GROUND PRESSURE SOCLE		1:20
DRAWER	DESIGNER			
INITIALS	Education + Name			
CHECKER	ACCEPTOR			
Education + Name	Education + Name			
Designing office Address 12345 Helsinki 020 123 4567 www.office.com firstname.lastname@office.com		PROJECT NUMBER	SUB NUMBER	DWG. NO.
				AV-1
		DESIGN GROUP	PAGE	DATE
		STR		20.03.2020
				REVISION



PROJECT NAME AV-1	PROJECT NUMBER	SUB NUMBER	DWG. NO. AV-1	
	DESIGN GROUP RAK	PAGE 2 / 3	DATE 20.03.2020	REVISI

REINFORCING BAR LIST																
REINFORCING BARS				D	L	dL	WEIGHT	BENDING DIMENSIONS [mm]								COMMENT
TYPE	POS	PCS	GRADE	[mm]	[mm]	[mm]	SUM [kg]	a	b	c	d	e	u	v	x	TD
D	2	26	B500B	8	1070		11.0	500	110	500						36
D	3	4	B500B	10	2040		5.0	600	891	600						46
A	4	4	B500B	10	3400		8.4	3403								
A	6	2	B500B	16	800		2.5	800								
D	7	4	B500B	8	1070		1.7	500	110	500						48
A	8	2	B500B	8	800		0.6	800								
A	9	1	B500B	10	930		0.6	925								
REINFORCING BAR TOTAL WEIGHT [kg]:															29.8	

REINFORCEMENT MESH LIST						
POS	PCS	GRADE	SIZE	NAME	kg/MESH	kg/SUM
AV-5	1	B500K	3493 x 915	#8-200	13.0	13.0
REINFORCEMENT MESH TOTAL WEIGHT [kg]:						13.0



PROJECT NAME AV-1	PROJECT NUMBER	SUB NUMBER	DWG. NO. AV-1	
	DESIGN GROUP RAK	PAGE 3 / 3	DATE 20.03.2020	REVISI